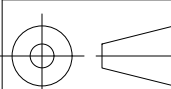

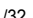

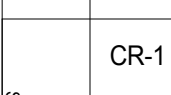


REVISIONS				
SYM.	ZONE	DESCRIPTION	DATE	APP.
A	Mult.	Added Welded V-Groove Support Ring	9/25/12	KWS

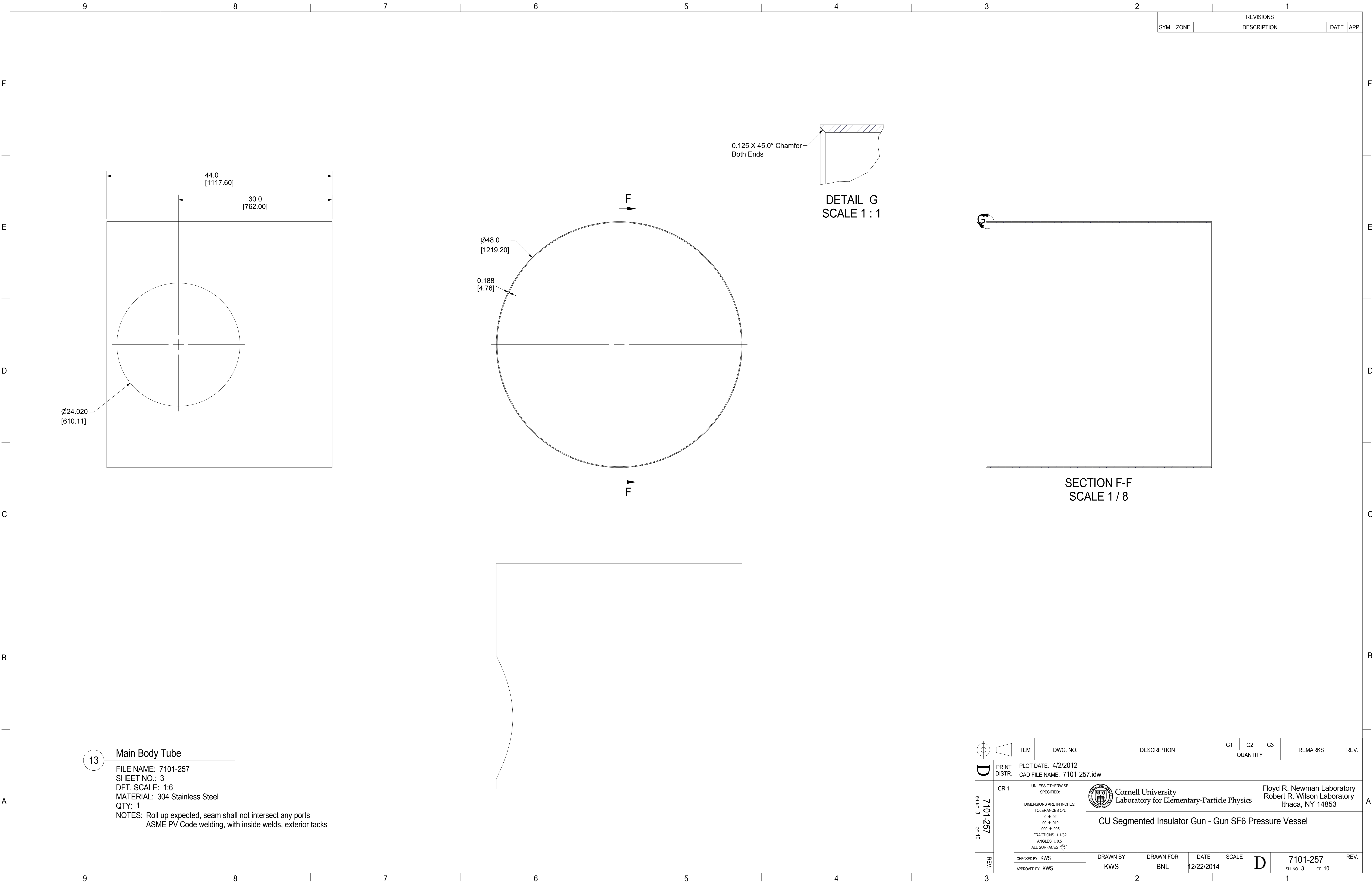
20	7101-257 Sh. 10	Welded Support Band	2					
19	QF40-150-LFT	KF-40 Half Nipple, 1.5"OD, 1.58" Long, SS	4				KJ Lesker	
18	7101-258 Sh. 6	SF6 Tank Gun Top Flange (Item 9)	1					
17	7101-258 Sh. 8	Top Head, Extension Tube (Item 10)	1					
16	7101-257 Sh. 5	SF6 Tank Dished Head	1					
15	7101-258 Sh. 15	Connection Flange B (Item 8)	1					
14	7101-258 Sh. 4	Fish Mouth Connection Tube (Item 7)	1					
13	7101-257 Sh. 3	Gun SF6 Tank Cylinder Roll Up	1					
12	7101-257 Sh. 9	SF6 Flat (Bottom) Flange	1					

		ITEM		DWG. NO.		DESCRIPTION			G1	G2	G3	REMARKS		REV.	
									QUANTITY						
	PRINT DISTR.	PLOT DATE: 4/2/2012 CAD FILE NAME: 7101-257.idw													
	CR-1	UNLESS OTHERWISE SPECIFIED: DIMENSIONS ARE IN INCHES; TOLERANCES ON: Ø ± .02 .00 ± .010 .000 ± .005 FRACTIONS ± 1/32 ANGLES ± 0.5° ALL SURFACES 			 Cornell University Laboratory for Elementary-Particle Physics Floyd R. Newman Laboratory Robert R. Wilson Laboratory Ithaca, NY 14853										
7101-257 SH. NO. 2 OF 10		CU Segmented Insulator Gun - Gun SF6 Pressure Vessel													
	REV. A	CHECKED BY: KWS			DRAWN BY KWS		DRAWN FOR BNL		DATE 12/22/2014		SCALE D		7101-257 SH. NO. 2 OF 10		REV. A
	APPROVED BY: KWS														

2 Gun SF6 Tank Cylinder


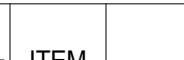
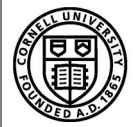

FILE NAME: 7101-257
SHEET NO.: 2
DFT. SCALE: 1:6
MATERIAL: Stainless Steel Weldment
QTY: 1
NOTES:

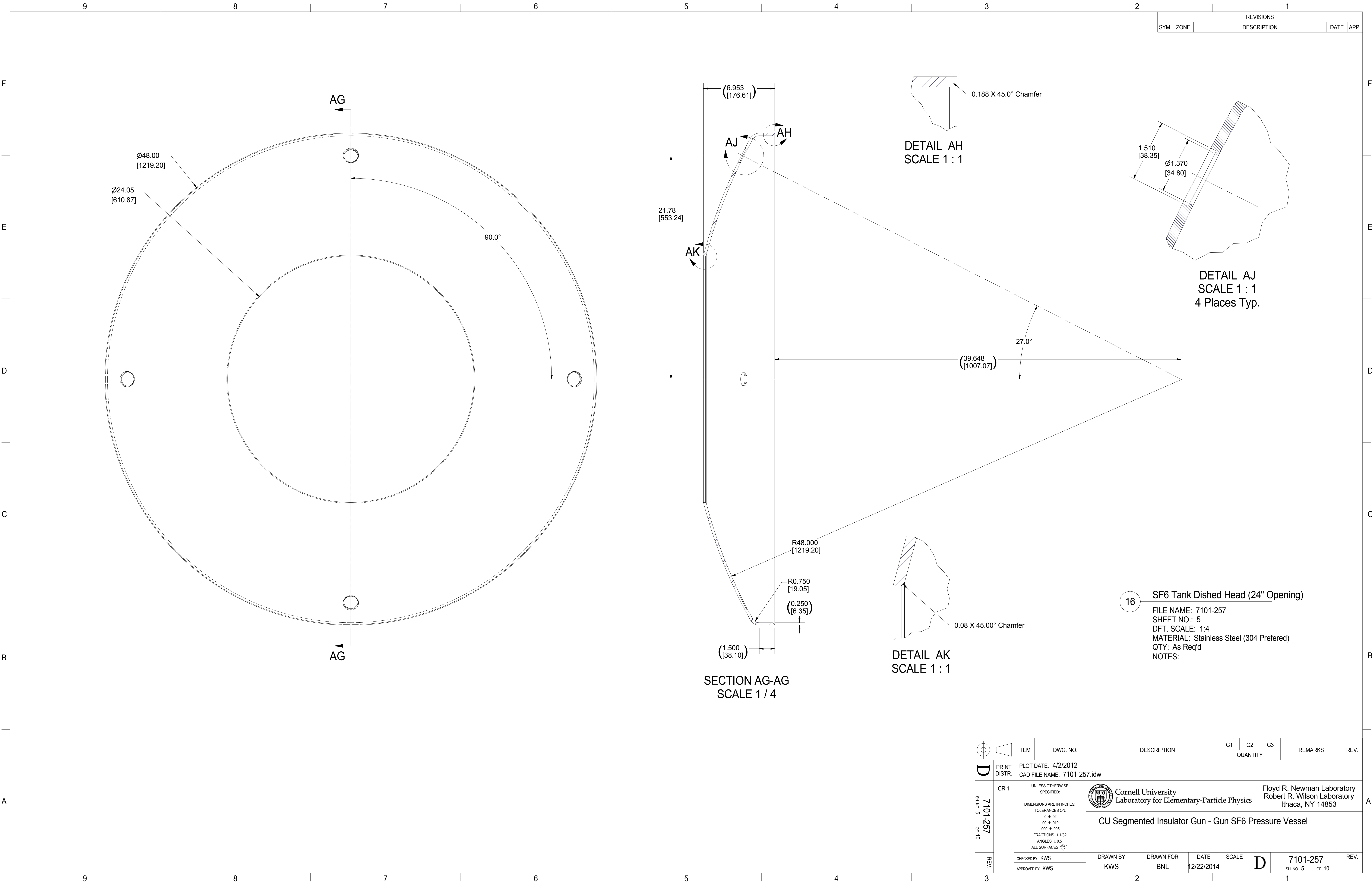
SECTION W-W
SCALE 1 / 6




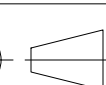

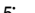
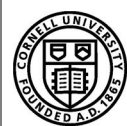

REVISIONS				
SYM.	ZONE	DESCRIPTION	DATE	APP.

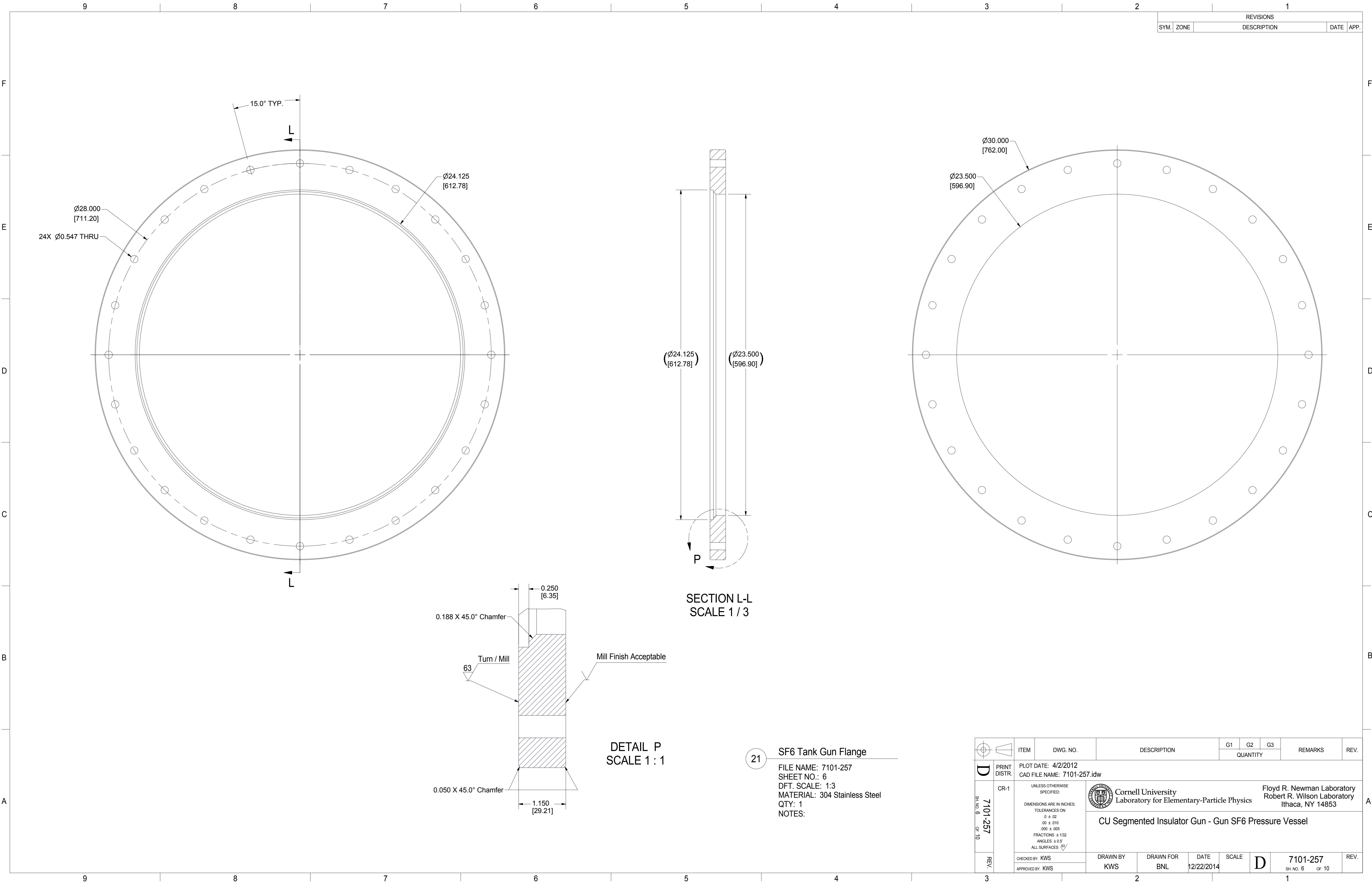
SECTION F-F
SCALE 1 / 8

		ITEM		DWG. NO.		DESCRIPTION		G1		G2		G3		REMARKS		REV.	
								QUANTITY									
																	
D		PRINT DISTR.		PLOT DATE: 4/2/2012 CAD FILE NAME: 7101-257.idw													
7101-257 SH. NO. 3 OF 10		CR-1		UNLESS OTHERWISE SPECIFIED:		 Cornell University Laboratory for Elementary-Particle Physics Floyd R. Newman Laboratory Robert R. Wilson Laboratory Ithaca, NY 14853											
		DIMENSIONS ARE IN INCHES:															
				TOLERANCES ON:		CU Segmented Insulator Gun - Gun SF6 Pressure Vessel											
				0 ± .02													
				.00 ± .010													
				.000 ± .005													
				FRACTIONS ± 1/32													
				ANGLES ± 0.5°													
				ALL SURFACES 													
REV.		CHECKED BY: KWS		DRAWN BY		DRAWN FOR		DATE		SCALE		D		7101-257		REV.	
		APPROVED BY: KWS		KWS		BNL		12/22/2014						SH. NO. 3 OF 10			


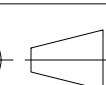
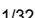
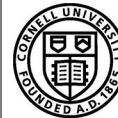


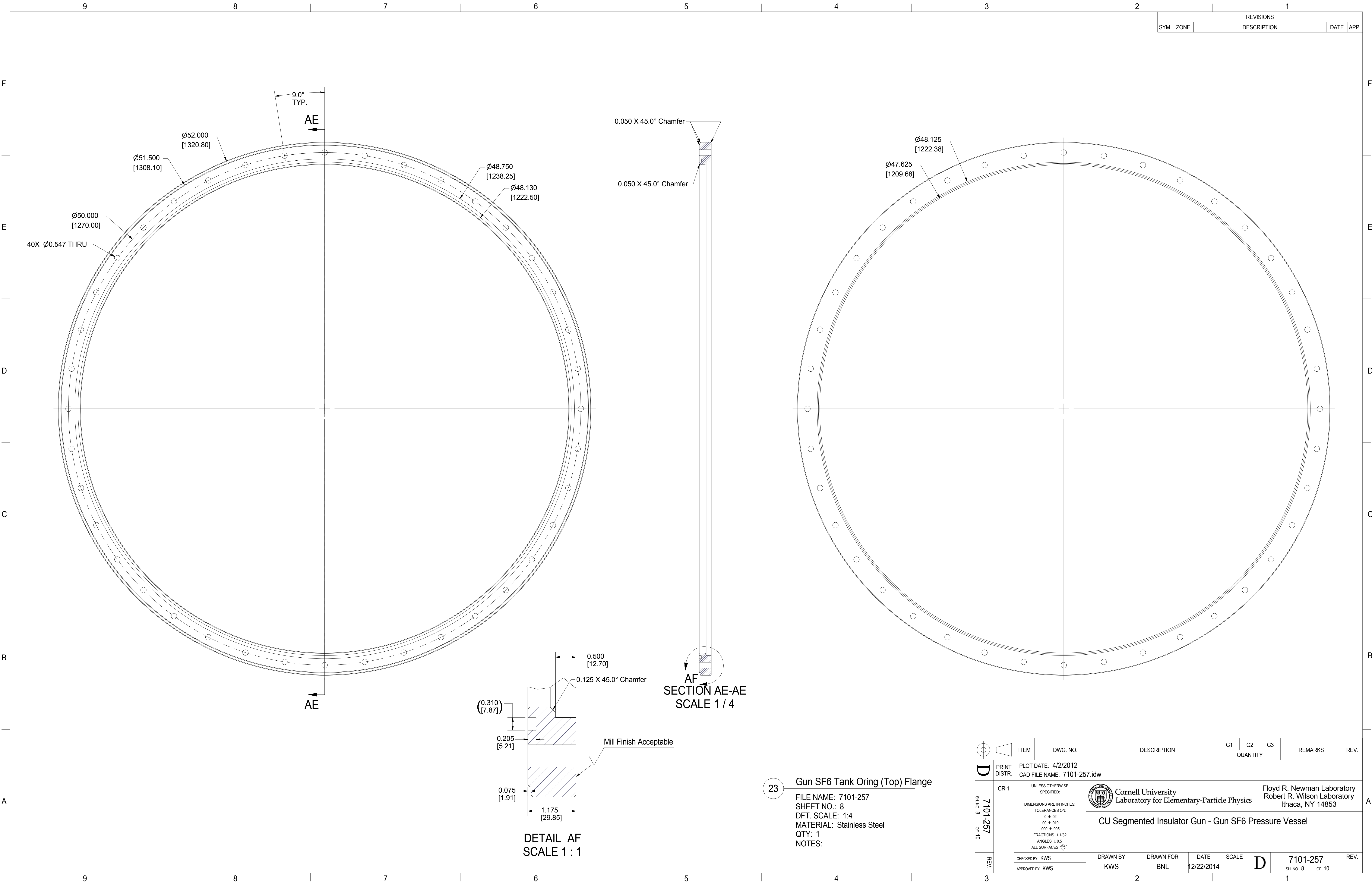
REVISIONS				
SYM.	ZONE	DESCRIPTION	DATE	APP.

 		ITEM	DWG. NO.	DESCRIPTION			G1	G2	G3	REMARKS	REV.
						QUANTITY					
	PRINT DISTR.	PLOT DATE: 4/2/2012 CAD FILE NAME: 7101-257.idw									
	CR-1	<div>UNLESS OTHERWISE SPECIFIED: DIMENSIONS ARE IN INCHES; TOLERANCES ON: .0 ± .02 .00 ± .010 .000 ± .005 FRACTIONS ± 1/32 ANGLES ± 0.5° ALL SURFACES </div>			<div> Cornell University Laboratory for Elementary-Particle Physics</div> <div>Floyd R. Newman Laboratory Robert R. Wilson Laboratory Ithaca, NY 14853</div>						
	CU Segmented Insulator Gun - Gun SF6 Pressure Vessel										
7101-257 SH. NO. 5 OF 10	REV.	CHECKED BY: KWS	DRAWN BY KWS	DRAWN FOR BNL	DATE 12/22/2014	SCALE		7101-257		SH. NO. 5 OF 10	REV.
		APPROVED BY: KWS									


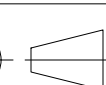

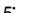
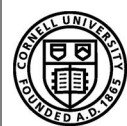



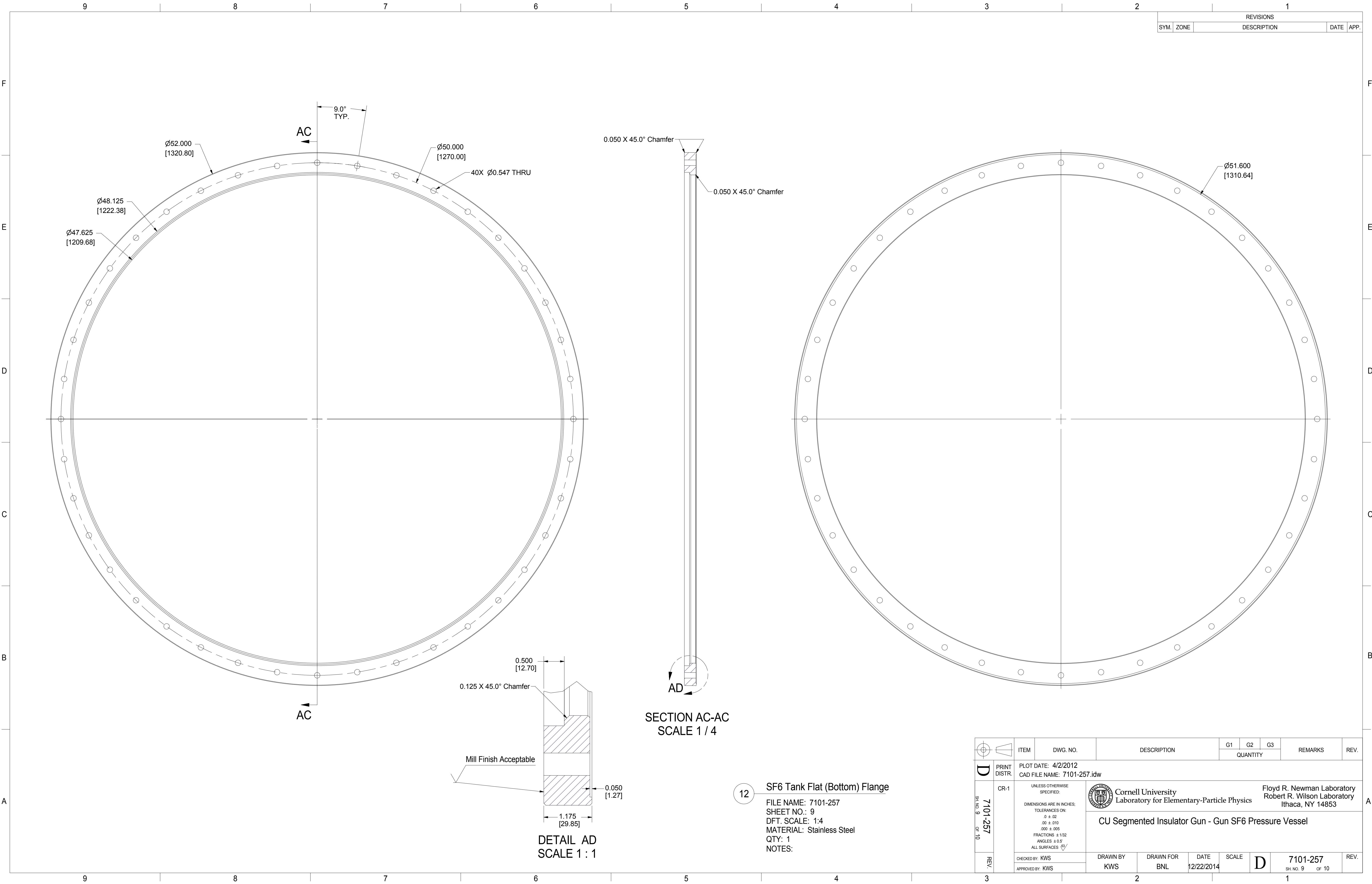
REVISIONS				
SYM.	ZONE	DESCRIPTION	DATE	APP.

 		ITEM		DWG. NO.		DESCRIPTION			G1	G2	G3	REMARKS		REV.	
									QUANTITY						
D	PRINT DISTR.	PLOT DATE: 4/2/2012 CAD FILE NAME: 7101-257.idw													
	CR-1	UNLESS OTHERWISE SPECIFIED: DIMENSIONS ARE IN INCHES; TOLERANCES ON: .0 ± .02 .00 ± .010 .000 ± .005 FRACTIONS ± 1/32 ANGLES ± 0.5° ALL SURFACES 			 Cornell University Laboratory for Elementary-Particle Physics							Floyd R. Newman Laboratory Robert R. Wilson Laboratory Ithaca, NY 14853			
SH. NO. 6 OF 10	7101-257	CU Segmented Insulator Gun - Gun SF6 Pressure Vessel													
	REV.	CHECKED BY: KWS APPROVED BY: KWS		DRAWN BY KWS		DRAWN FOR BNL		DATE 12/22/2014		SCALE D		7101-257 SH. NO. 6 OF 10		REV.	



REVISIONS				
SYM.	ZONE	DESCRIPTION	DATE	APP.

 		ITEM	DWG. NO.	DESCRIPTION			G1	G2	G3	REMARKS	REV.		
						QUANTITY							
	PRINT DISTR.	PLOT DATE: 4/2/2012 CAD FILE NAME: 7101-257.idw											
	CR-1	<p>UNLESS OTHERWISE SPECIFIED:</p> <p>DIMENSIONS ARE IN INCHES:</p> <p>TOLERANCES ON:</p> <p>Ø ± .02</p> <p>.00 ± .010</p> <p>.000 ± .005</p> <p>FRACTIONS ± 1/32</p> <p>ANGLES ± 0.5°</p> <p>ALL SURFACES </p>			 Cornell University Laboratory for Elementary-Particle Physics					Floyd R. Newman Laboratory Robert R. Wilson Laboratory Ithaca, NY 14853			
7101-257		CU Segmented Insulator Gun - Gun SF6 Pressure Vessel											
SH. NO. 8 OF 10	REV.	CHECKED BY: KWS	DRAWN BY KWS	DRAWN FOR BNL	DATE 12/22/2014	SCALE		7101-257			REV.		
		APPROVED BY: KWS							SH. NO. 8 OF 10				


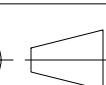




REVISIONS			
SYM.	ZONE	DESCRIPTION	DATE APP.

SECTION AC-AC
SCALE 1 / 4

DETAIL AD
SCALE 1 : 1

12 SF6 Tank Flat (Bottom) Flange
FILE NAME: 7101-257
SHEET NO.: 9
DFT. SCALE: 1:4
MATERIAL: Stainless Steel
QTY: 1
NOTES:

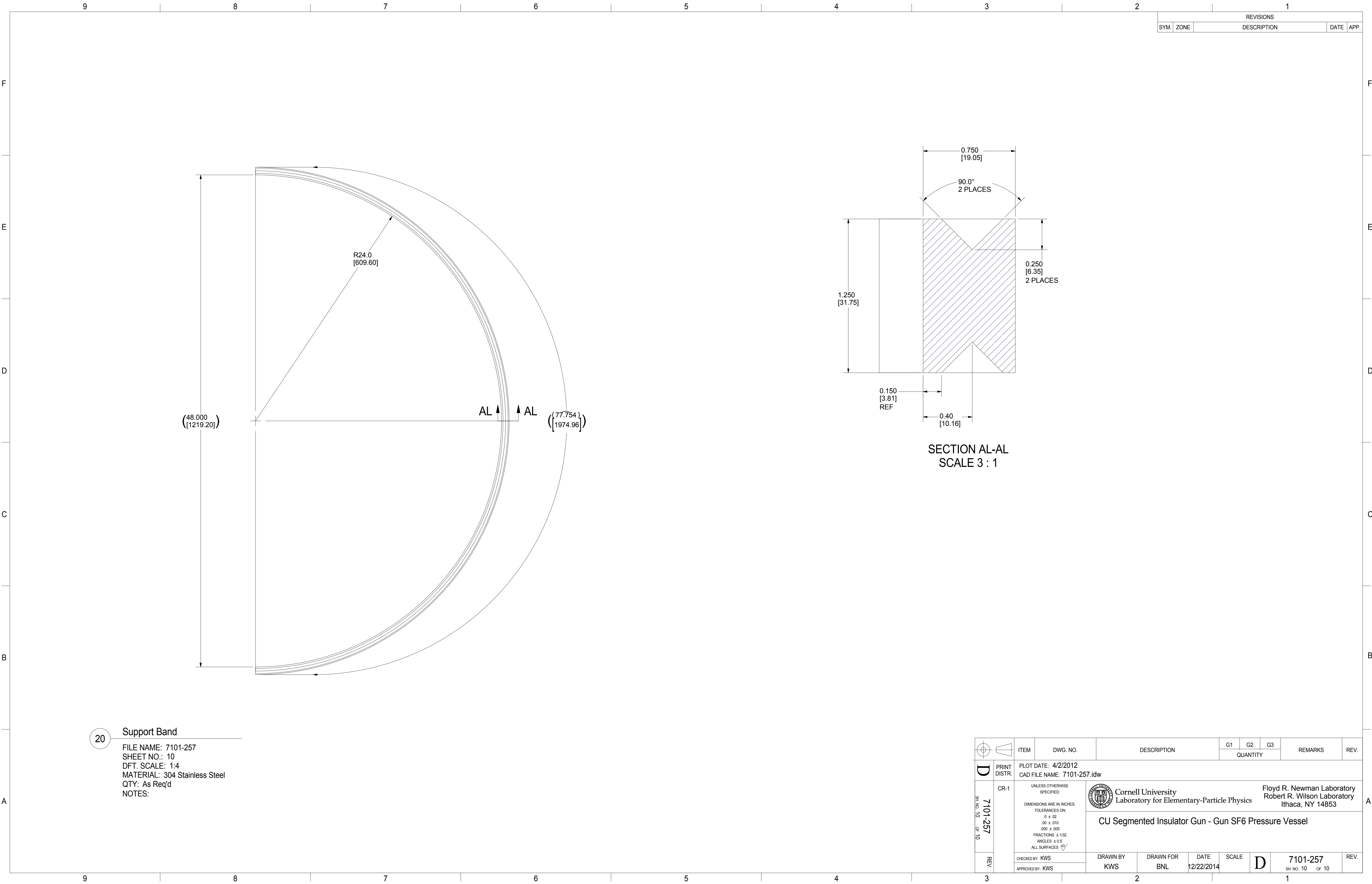
 		ITEM		DWG. NO.		DESCRIPTION			G1	G2	G3	REMARKS		REV.
									QUANTITY					
D	PRINT DISTR.	PLOT DATE: 4/2/2012 CAD FILE NAME: 7101-257.idw												
	CR-1	UNLESS OTHERWISE SPECIFIED: DIMENSIONS ARE IN INCHES; TOLERANCES ON: .0 ± .02 .00 ± .010 .000 ± .005 FRACTIONS ± 1/32 ANGLES ± 0.5° ALL SURFACES 			 Cornell University Laboratory for Elementary-Particle Physics						Floyd R. Newman Laboratory Robert R. Wilson Laboratory Ithaca, NY 14853			
SH. NO. 9 OF 10	7101-257	CU Segmented Insulator Gun - Gun SF6 Pressure Vessel												
	REV.	CHECKED BY: KWS APPROVED BY: KWS		DRAWN BY KWS		DRAWN FOR BNL		DATE 12/22/2014		SCALE D		7101-257 SH. NO. 9 OF 10		REV.



Cornell University
Laboratory for Elementary-Particle Physics

Floyd R. Newman Laboratory
Robert R. Wilson Laboratory
Ithaca, NY 14853


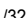

CU Segmented Insulator Gun - Gun SF6 Pressure Vessel



REVISIONS				
SYM.	ZONE	DESCRIPTION	DATE	APP.

20 Support Band

FILE NAME: 7101-257
SHEET NO.: 10
DFT. SCALE: 1:4
MATERIAL: 304 Stainless Steel
QTY: As Req'd
NOTES:

		ITEM		DWG. NO.		DESCRIPTION			G1	G2	G3	REMARKS		REV.
									QUANTITY					
D	PRINT DISTR.	PLOT DATE: 4/2/2012 CAD FILE NAME: 7101-257.idw												
	CR-1	<div>UNLESS OTHERWISE SPECIFIED: DIMENSIONS ARE IN INCHES; TOLERANCES ON: .0 ± .02 .00 ± .010 .000 ± .005 FRACTIONS ± 1/32 ANGLES ± 0.5° ALL SURFACES </div>		<div>Cornell University Laboratory for Elementary-Particle Physics</div>						<div>Floyd R. Newman Laboratory Robert R. Wilson Laboratory Ithaca, NY 14853</div>				
SH. NO. 10 OF 10	7101-257	CU Segmented Insulator Gun - Gun SF6 Pressure Vessel												
REV.	CHECKED BY: KWS	DRAWN BY KWS		DRAWN FOR BNL		DATE 12/22/2014		SCALE	D	7101-257			REV.	
	APPROVED BY: KWS	SH. NO. 10 OF 10												